

GC PLEASE VERIFY THE ELEVATION (TYP.)

EL. 28'-11 1/2"
T/MASONRY

EL. 28'-6"
T/ATTIC

EL. 24'-4"
B/DECK

EL. 14'-0"
T/2ND FLOOR

EL. 0'-0"
T/SOG
EL. -1'-4"
T/FTG.

FOR REIN. DETAILS
REFER FDN DWG. (TYP)

12" THICK WALL
ELEVATION B
SCALE : 1/4"=1'-0"
REF : 1/S-307

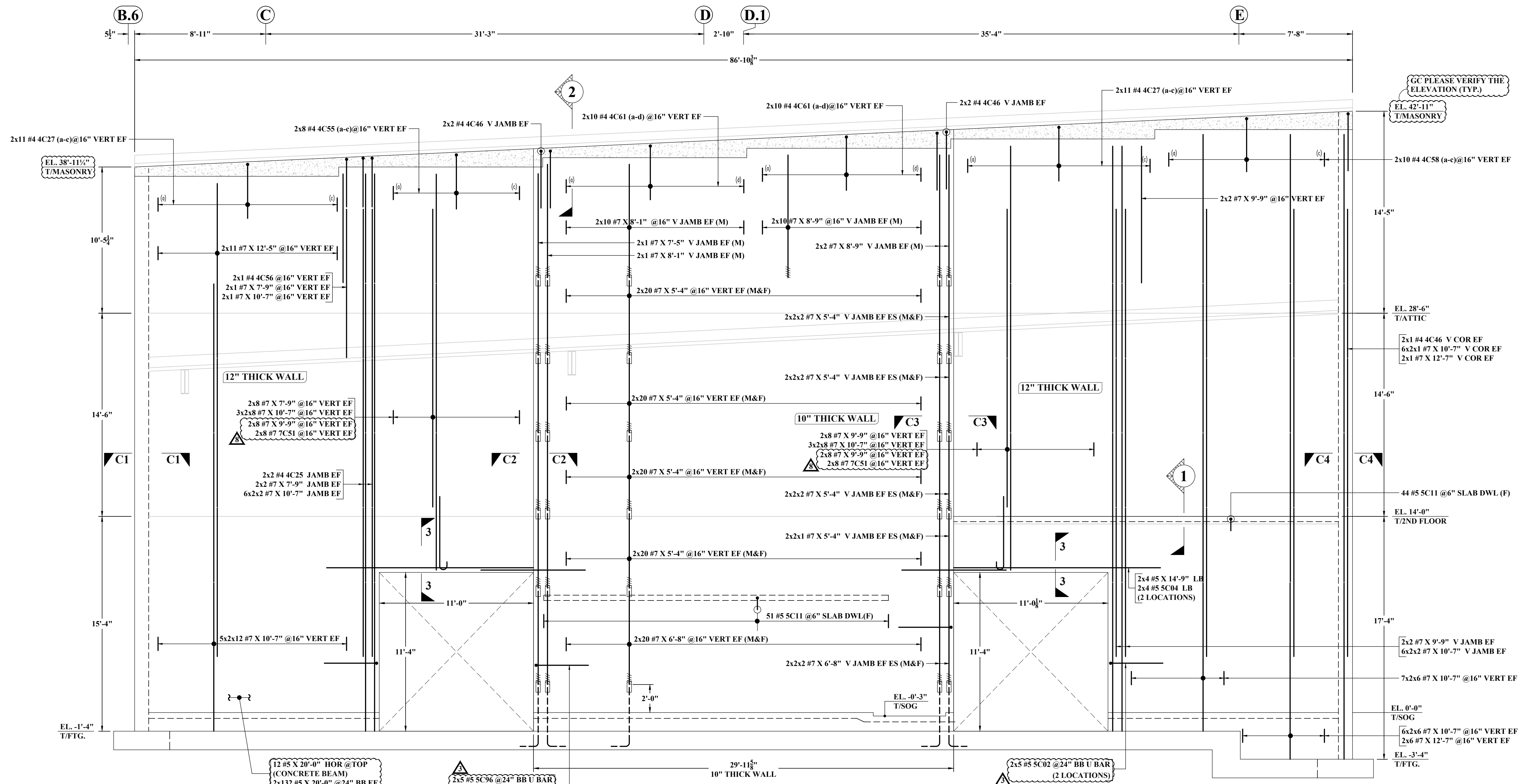
ABBREVIATIONS	
TOP	-
BOTTOM	BOT
TOP&BOTTOM	T&B
CONTINUOUS	CONT
FACE BAR	-
CORNER BAR	COR
VERTICAL	VERT
HORIZONTAL	HOR
STIRRUPS	STIRR
EACH WAY	EW
EACH FACE	EF
INNER FACE	IF
OUTER FACE	OF
EACH SIDE	ES
MASONRY	M
DOWEL	DWL
DOWEL/VERTICAL	D/V
TRANSVERSE	TRANS
LONG WAY BAR	LW
SHORT WAY BAR	SW

MASONRY WALL LAP SCHEDULE						
REF: 9/S-551						
SIZE	(1) BAR IN CENTER OF :				(2) BARS IN SINGLE VERTICAL CELL :	(2) BARS IN SINGLE HORIZONTAL BB :
	6" CMU	8" CMU	10" CMU	12" CMU		
#3	12"	12"	12"	12"	17"	25"
#4	17"	13"	12"	12"	30"	36"
#5	27"	20"	15"	13"	45"	45"
#6	54"	37"	29"	24"	54"	54"
#7	NP	52"	40"	33"	63"	63"
#8	NP	72"	61"	50"	72"	72"
#9	NP	NP	73"	64"	82"	82"

- NOTES:-**
- TYPICAL CLEARANCES
 - A). TOP - 2"
 - B). SIDES - 2"
 - A/E PLEASE VERIFY THE ALL CLOUDED ITEMS
 - PROVIDE FIELD CUT AS REQUIRED LOCATIONS
 - BARS TO BE PLACED AT EQUAL SPACING U.O.N.
 - TILT HOOK TO ACCOMMODATE THE COVER, IF NEED

ALL BARS IN THIS DRAWING ASTM A615 GRADE 60 BLACK UNCOATED

NOTE: REINFORCING STEEL PLACING DRAWINGS TO BE USED ONLY IN CONJUNCTION WITH CONTRACT DRAWINGS AND SPECIFICATIONS. ELEVATIONS & DIMENSIONS SHOWN ON THIS DRAWING ARE FOR VERIFICATION BY THE EOR OR FOR DETAILING PURPOSES ONLY AND SHOULD NOT BE USED FOR CONSTRUCTION UNLESS VERIFIED BY THE ARCHITECT, ENGINEER OF RECORD, OR CONTRACTOR.



GC PLEASE VERIFY THE ELEVATION (TYP.)
 EL. 42'-11\"/>

EL. 28'-6\"/>

EL. 14'-0\"/>

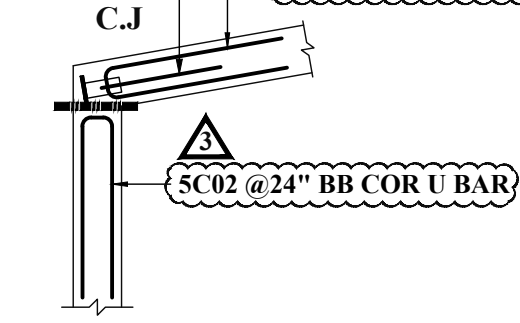
EL. 0'-0\"/>

EL. -3'-4\"/>

ABBREVIATIONS	
TOP	-
BOTTOM	BOT
TOP&BOTTOM	T&B
CONTINUOUS	CONT
FACE BAR	-
CORNER BAR	COR
VERTICAL	VERT
HORIZONTAL	HOR
STIRRUPS	STIRR
EACH WAY	EW
EACH FACE	EF
INNER FACE	IF
OUTER FACE	OF
EACH SIDE	ES
MASONRY	M
DOWEL	DWL
DOWEL/VERTICAL	D/V
TRANSVERSE	TRANS
LONG WAY BAR	LW
SHORT WAY BAR	SW

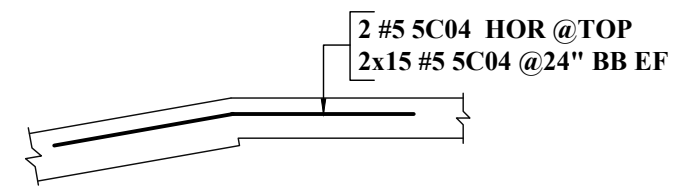
10" & 12" THICK WALL
ELEVATION C
 SCALE: 1/4"=1'-0"
 REF: 3/S-307

15 #5 X 2'-6" @ 32" DWL @ C/J (F)
 FIELD BEND TO CORNER BAR



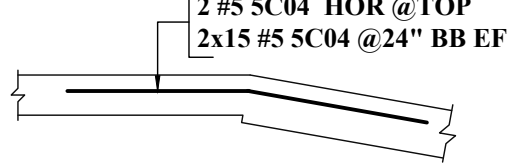
PLAN VIEW : C1-C1
 SCALE: 1/4"=1'-0"
 REF: 1/S-111D & 3/S-307

2 #5 SC02 HOR @ TOP COR
 2 #5 SC02 BB COR U BAR
 20 #5 SC02 @ 24" BB COR U BAR
 ALTERNATE DIRECTION



PLAN VIEW : C2-C2
 SCALE: 1/4"=1'-0"
 REF: 1/S-111D & 3/S-307

2 #5 SC04 HOR @ TOP
 2x15 #5 SC04 @ 24" BB EF



PLAN VIEW : C3-C3
 SCALE: 1/4"=1'-0"
 REF: 1/S-111D & 3/S-307

2 #5 SC02 HOR @ TOP COR
 24 #5 SC02 @ 24" BB COR U BAR
 ALTERNATE DIRECTION



PLAN VIEW : C4-C4
 SCALE: 1/4"=1'-0"
 REF: 1/S-111D & 3/S-307

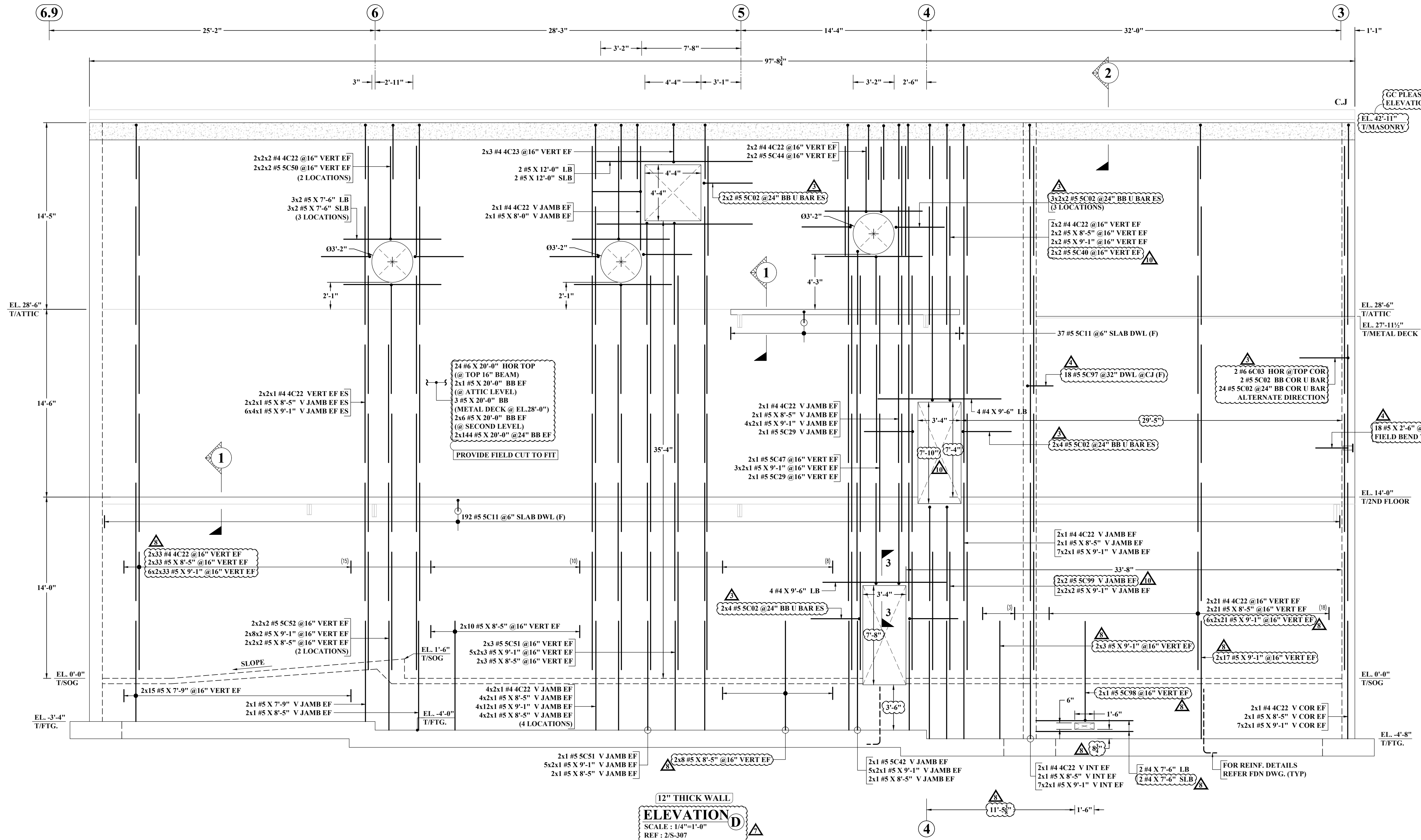
MASONRY WALL LAP SCHEDULE						
REF: 9/S-551						
SIZE	(1) BAR IN CENTER OF :				(2) BARS IN SINGLE	(2) BARS IN SINGLE
	6" CMU	8" CMU	10" CMU	12" CMU	VERTICAL CELL :	HORIZONTAL BB :
#3	12"	12"	12"	12"	17"	25"
#4	17"	13"	12"	12"	30"	36"
#5	27"	20"	15"	13"	45"	45"
#6	54"	37"	29"	24"	54"	54"
#7	NP	52"	40"	33"	63"	63"
#8	NP	72"	61"	50"	72"	72"
#9	NP	NP	73"	64"	82"	82"

NOTES:-

- TYPICAL CLEARANCES
 A). TOP - 2"
 B). SIDES - 2"
- A/E PLEASE VERIFY THE ALL CLOUDED ITEMS
- PROVIDE FIELD CUT AS REQUIRED LOCATIONS
- BAR TO BE PLACED AT EQUAL SPACING U.O.N.
- TILT HOOK TO ACCOMMODATE THE COVER, IF NEED

ALL BARS IN THIS DRAWING ASTM A615 GRADE 60 BLACK UNCOATED

NOTE: REINFORCING STEEL PLACING DRAWINGS TO BE USED ONLY IN CONJUNCTION WITH CONTRACT DRAWINGS AND SPECIFICATIONS. ELEVATIONS & DIMENSIONS SHOWN ON THIS DRAWING ARE FOR VERIFICATION BY THE EOR OR FOR DETAILING PURPOSES ONLY AND SHOULD NOT BE USED FOR CONSTRUCTION UNLESS VERIFIED BY THE ARCHITECT, ENGINEER OF RECORD, OR CONTRACTOR.



GC PLEASE VERIFY THE ELEVATION (TYP.)

ABBREVIATIONS	
TOP	-
BOTTOM	BOT
TOP&BOTTOM	T&B
CONTINUOUS	CONT
FACE BAR	-
CORNER BAR	COR
VERTICAL	VERT
HORIZONTAL	HOR
STIRRUPS	STIRR
EACH WAY	EW
EACH FACE	EF
INNER FACE	IF
OUTER FACE	OF
EACH SIDE	ES
MASONRY	M
DOWEL	DWL
DOWEL/VERTICAL	D/V
TRANSVERSE	TRANS
LONG WAY BAR	LW
SHORT WAY BAR	SW

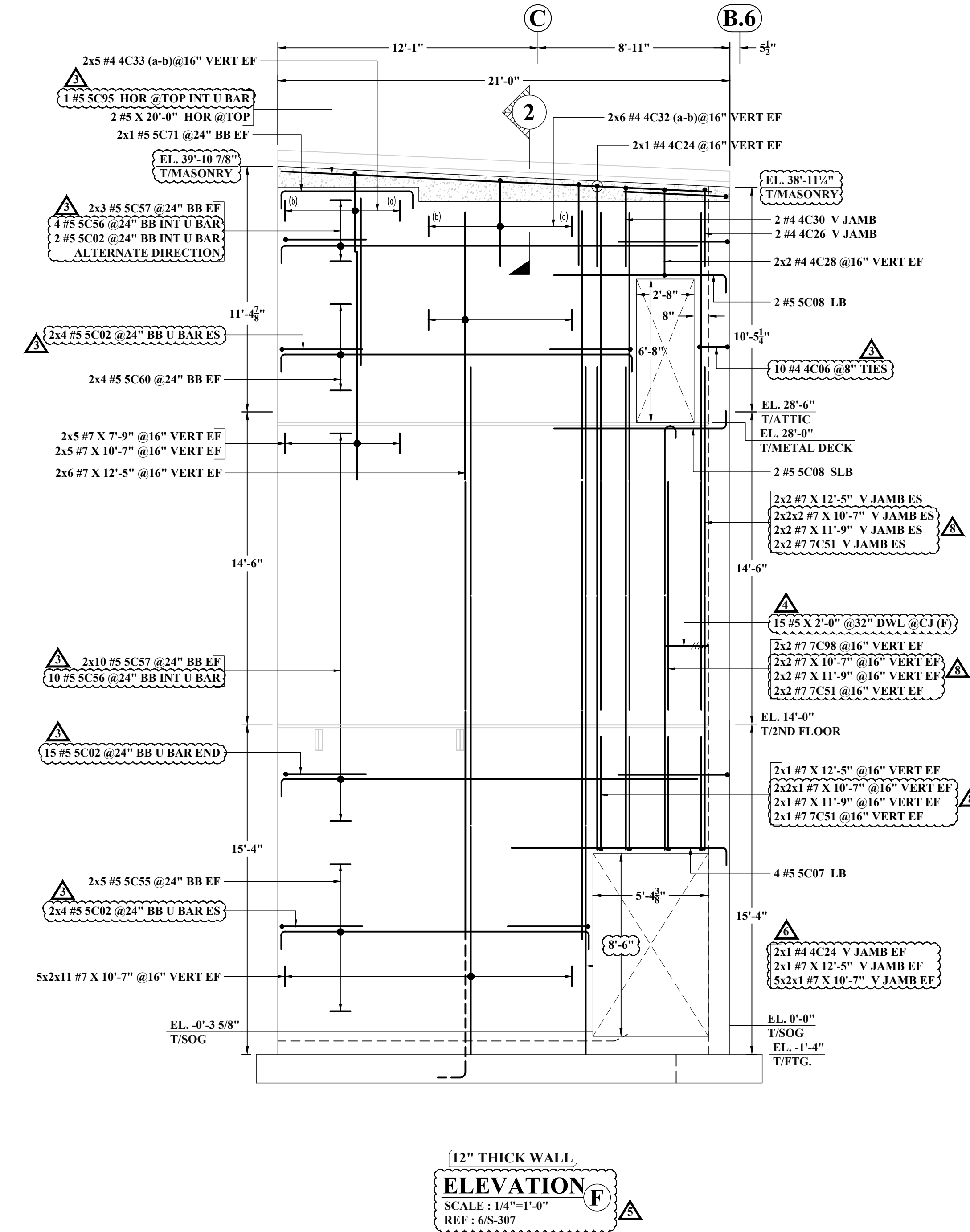
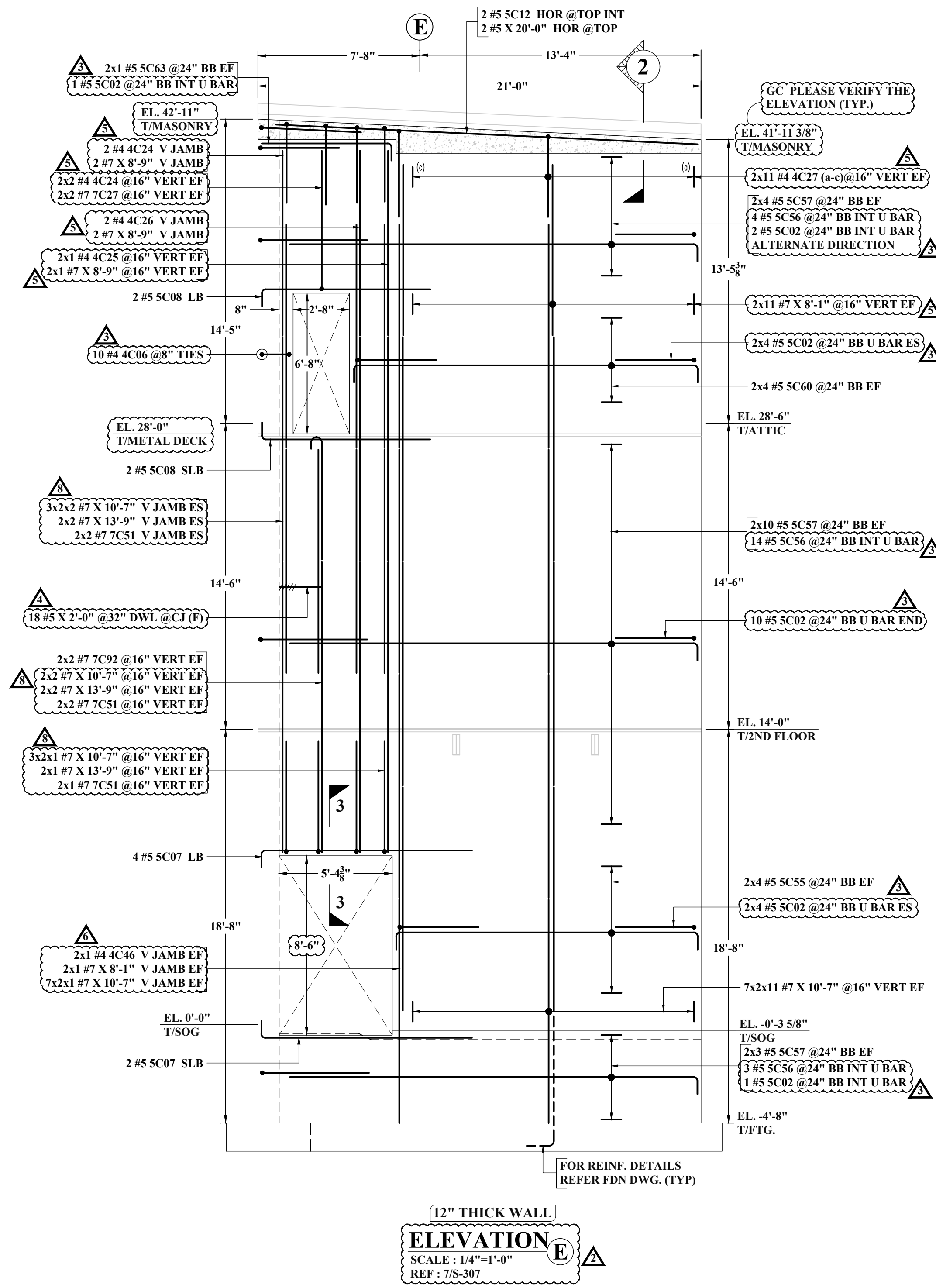
12" THICK WALL
ELEVATION D
 SCALE: 1/4"=1'-0"
 REF: 2S-307

MASONRY WALL LAP SCHEDULE						
REF: 9S-551						
SIZE	(1) BAR IN CENTER OF:				(2) BARS IN SINGLE VERTICAL CELL:	(2) BARS IN SINGLE HORIZONTAL BB:
	6" CMU	8" CMU	10" CMU	12" CMU		
#3	12"	12"	12"	12"	17"	25"
#4	17"	13"	12"	12"	30"	36"
#5	27"	20"	15"	13"	45"	45"
#6	54"	37"	29"	24"	54"	54"
#7	NP	52"	40"	33"	63"	63"
#8	NP	72"	61"	50"	72"	72"
#9	NP	NP	73"	64"	82"	82"

- NOTES:-**
- TYPICAL CLEARANCES
 - A). TOP - 2"
 - B). SIDES - 2"
 - A/E PLEASE VERIFY THE ALL CLOUDED ITEMS
 - PROVIDE FIELD CUT AS REQUIRED LOCATIONS
 - BARS TO BE PLACED AT EQUAL SPACING U.O.N.
 - TILT HOOK TO ACCOMMODATE THE COVER, IF NEED

ALL BARS IN THIS DRAWING ASTM A615 GRADE 60 BLACK UNCOATED

NOTE: REINFORCING STEEL PLACING DRAWINGS TO BE USED ONLY IN CONJUNCTION WITH CONTRACT DRAWINGS AND SPECIFICATIONS. ELEVATIONS & DIMENSIONS SHOWN ON THIS DRAWING ARE FOR VERIFICATION BY THE EOR OR FOR DETAILING PURPOSES ONLY AND SHOULD NOT BE USED FOR CONSTRUCTION UNLESS VERIFIED BY THE ARCHITECT, ENGINEER OF RECORD, OR CONTRACTOR.



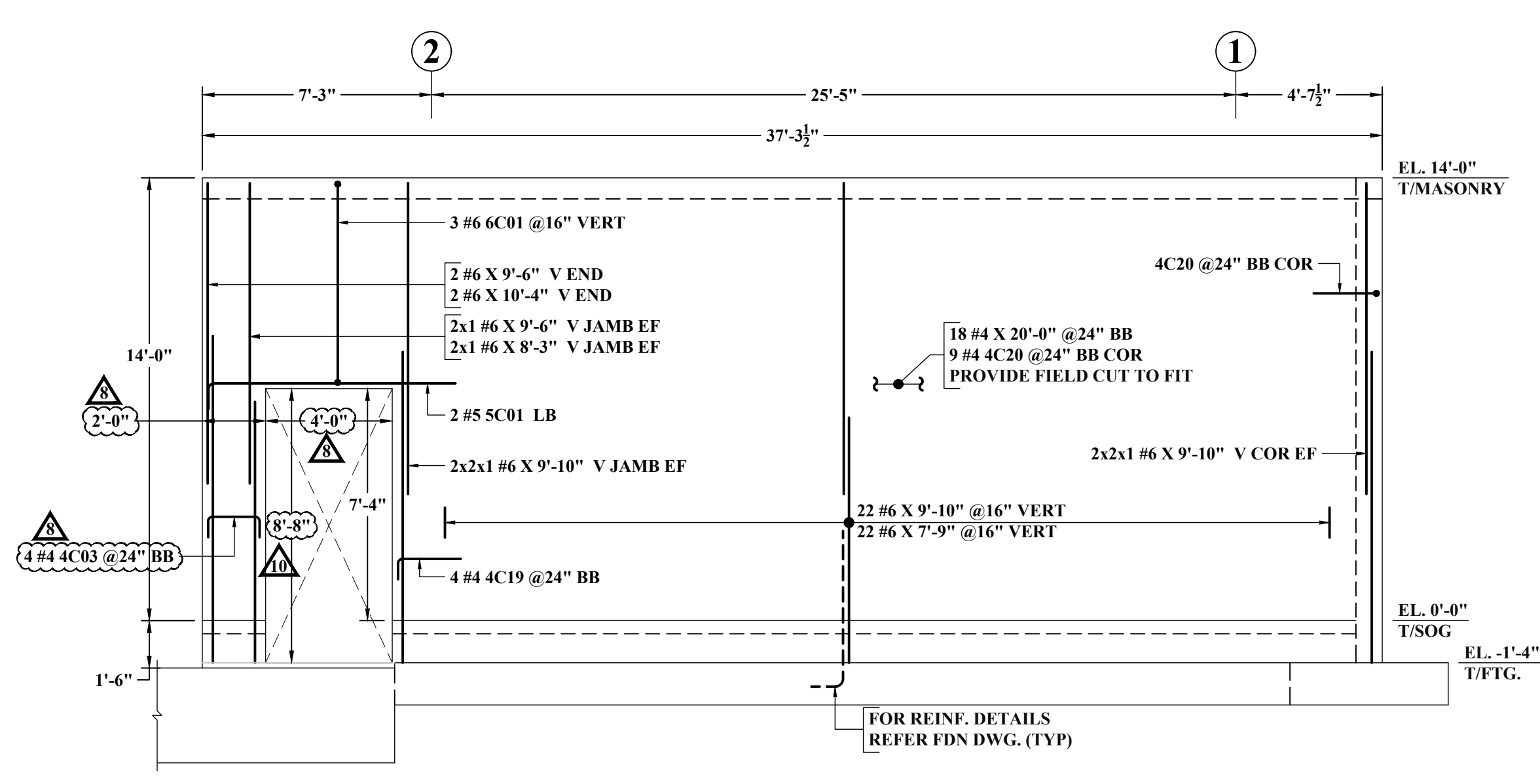
ABBREVIATIONS	
TOP	-
BOTTOM	BOT
TOP&BOTTOM	T&B
CONTINUOUS	CONT
FACE BAR	-
CORNER BAR	COR
VERTICAL	VERT
HORIZONTAL	HOR
STIRRUPS	STIRR
EACH WAY	EW
EACH FACE	EF
INNER FACE	IF
OUTER FACE	OF
EACH SIDE	ES
MASONRY	M
DOWL	DWL
DOWL/VERTICAL	D/V
TRANSVERSE	TRANS
LONG WAY BAR	LW
SHORT WAY BAR	SW

12" THICK WALL
ELEVATION F
 SCALE: 1/4"=1'-0"
 REF: 6/S-307

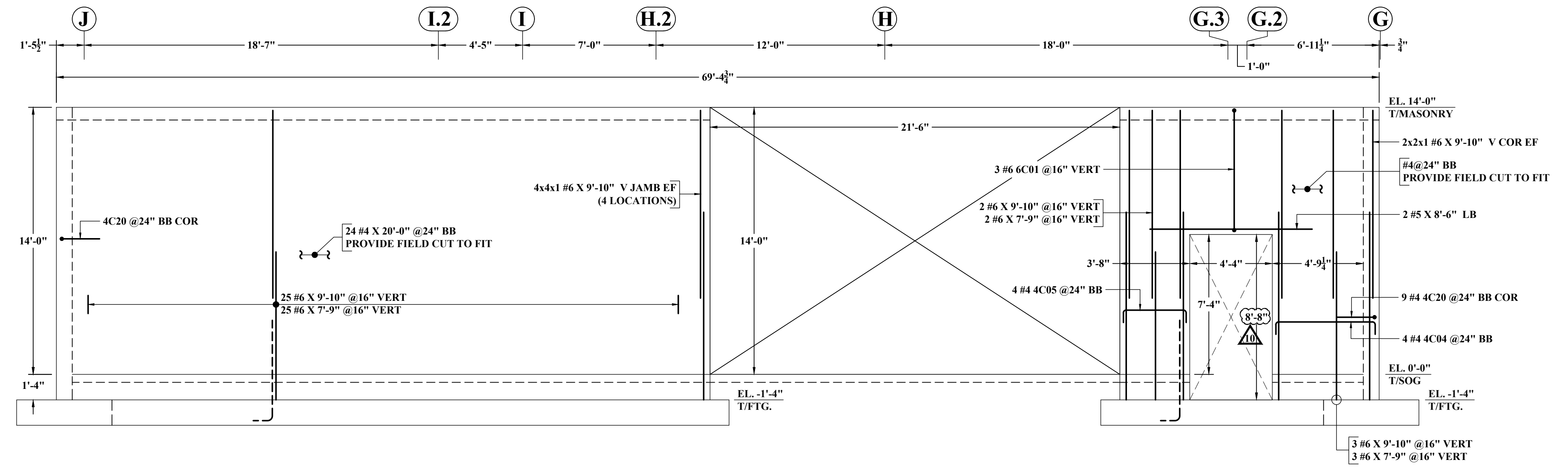
MASONRY WALL LAP SCHEDULE						
REF: 9/S-551						
SIZE	(1) BAR IN CENTER OF:				(2) BARS IN SINGLE VERTICAL CELL:	(2) BARS IN SINGLE HORIZONTAL BB:
	6" CMU	8" CMU	10" CMU	12" CMU		
#3	12"	12"	12"	12"	17"	25"
#4	17"	13"	12"	12"	30"	36"
#5	27"	20"	15"	13"	45"	45"
#6	54"	37"	29"	24"	54"	54"
#7	NP	52"	40"	33"	63"	63"
#8	NP	72"	61"	50"	72"	72"
#9	NP	NP	73"	64"	82"	82"

- NOTES:-**
- TYPICAL CLEARANCES
 A). TOP - 2"
 B). SIDES - 2"
 - A/E PLEASE VERIFY THE ALL CLOUDED ITEMS
 - PROVIDE FIELD CUT AS REQUIRED LOCATIONS
 - BARS TO BE PLACED AT EQUAL SPACING U.O.N.
 - TILT HOOK TO ACCOMMODATE THE COVER, IF NEED

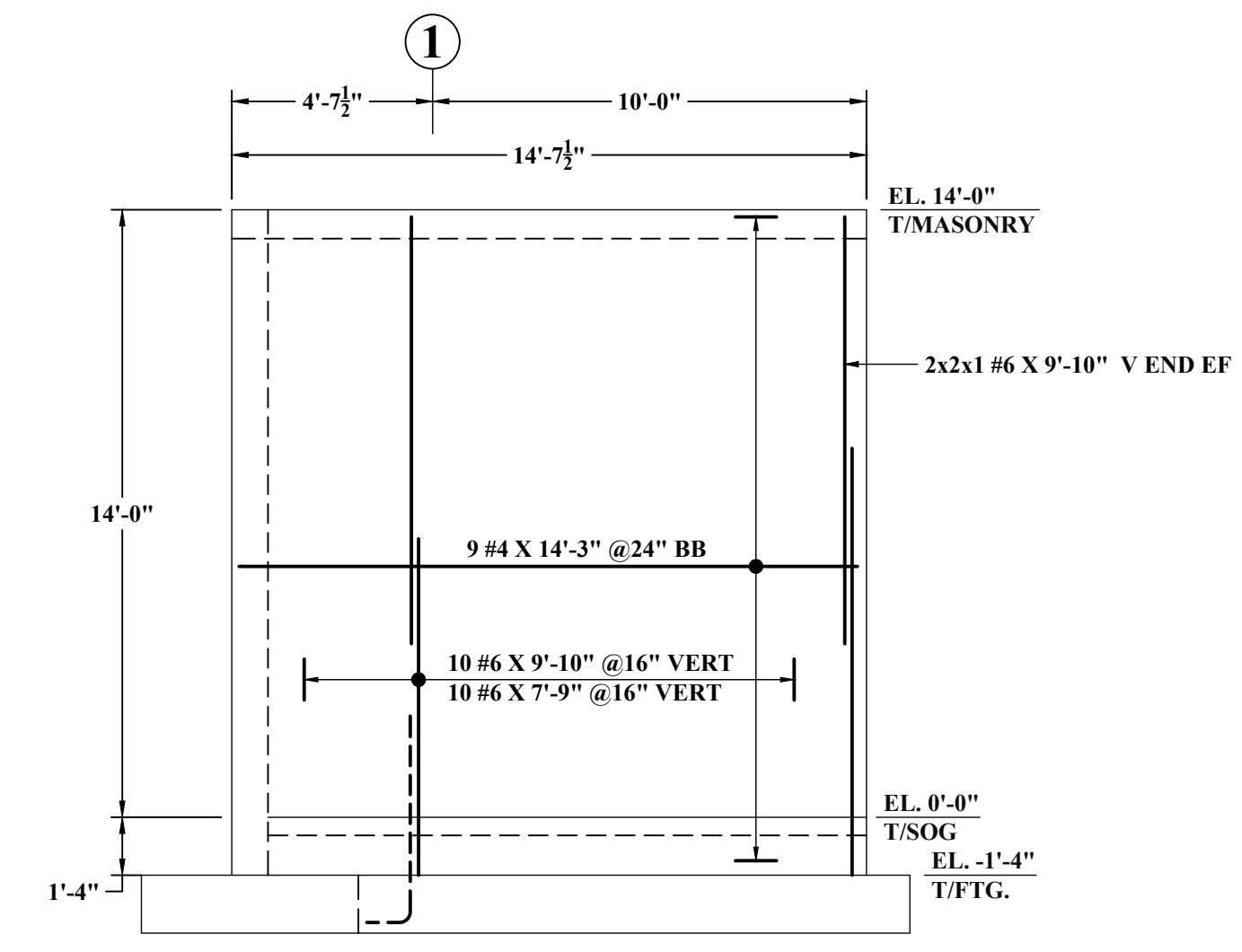
ALL BARS IN THIS DRAWING ASTM A615 GRADE 60 BLACK UNCOATED



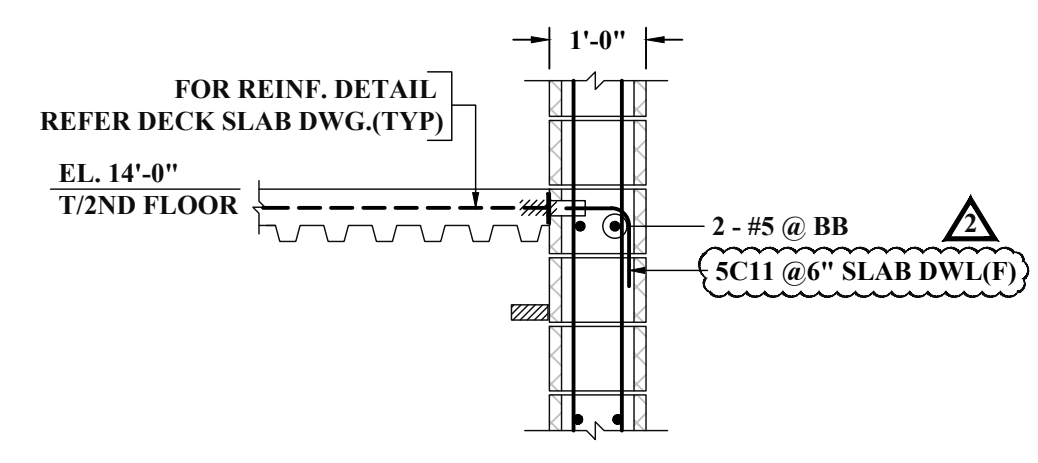
10" THICK WALL
ELEVATION G
 SCALE: 1/4"=1'-0"
 REF: 3/A-206



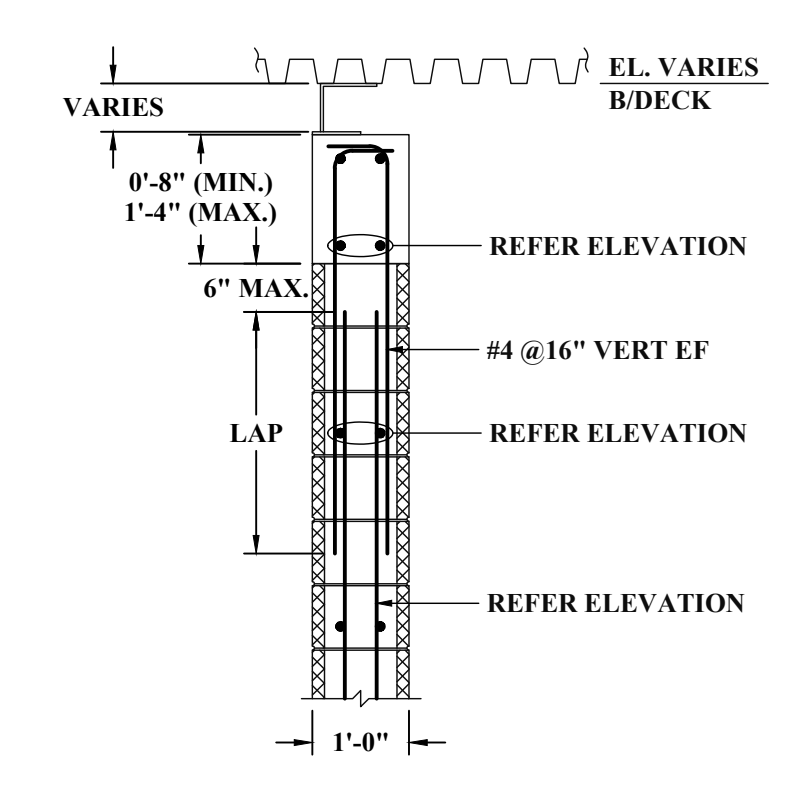
10" THICK WALL
ELEVATION H
 SCALE: 1/4"=1'-0"
 REF: 9/A-304



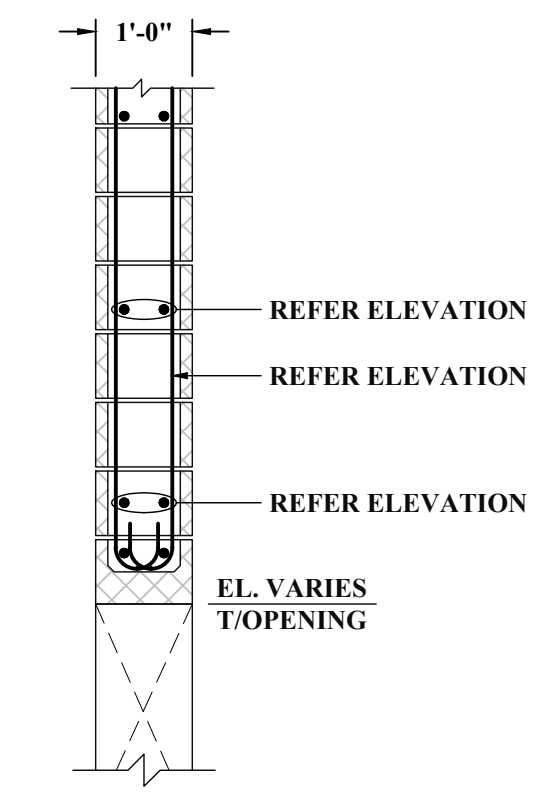
10" THICK WALL
ELEVATION J
 SCALE: 1/4"=1'-0"
 REF: 9/A-304



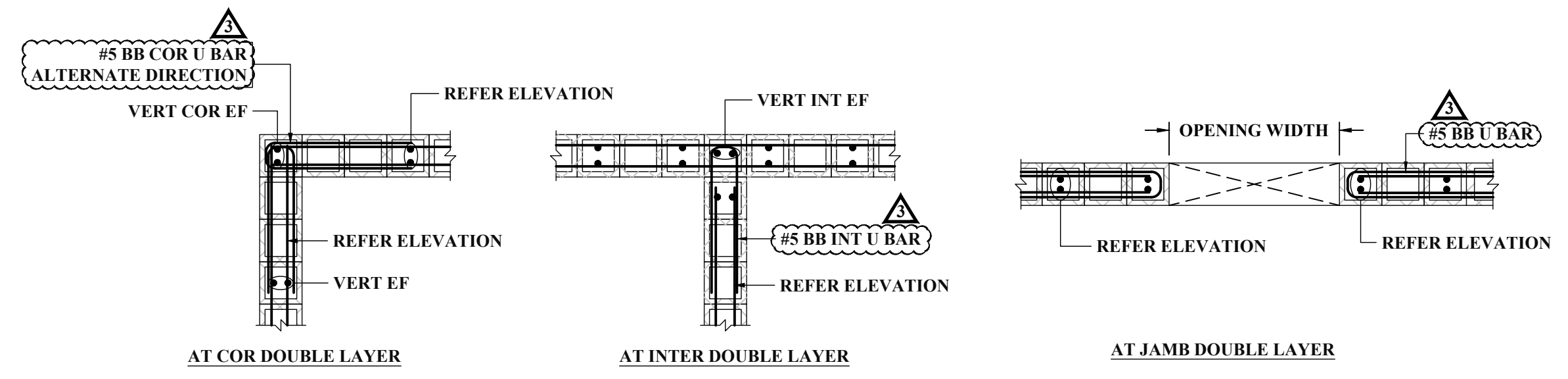
SECTION 1
 SCALE: 1/2"=1'-0"
 REF: 6/S-551



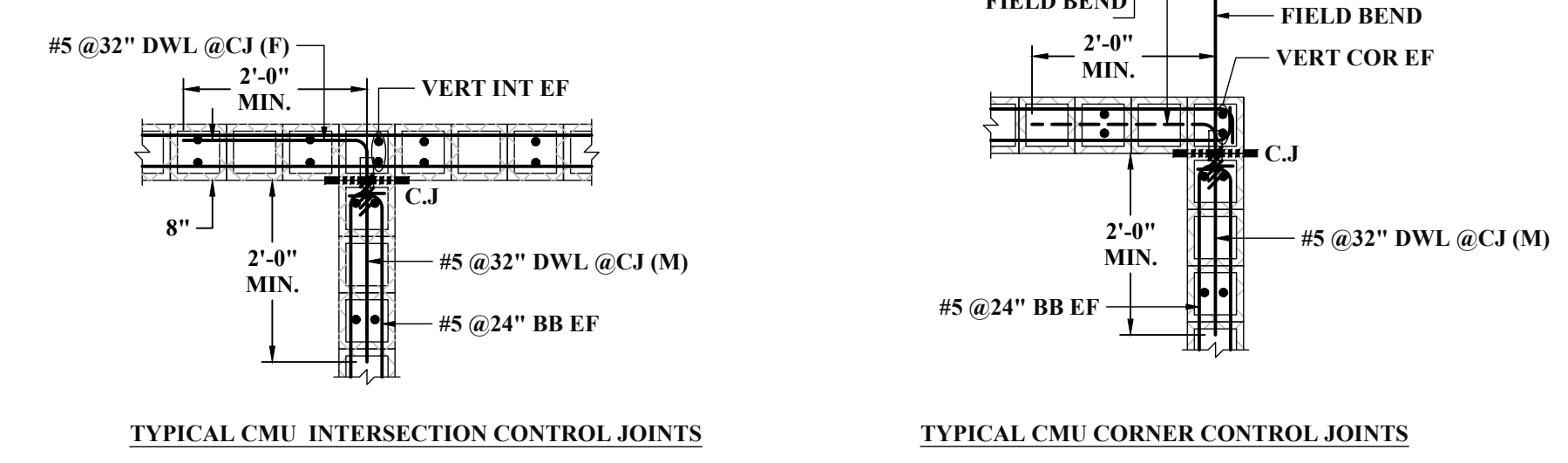
SECTION 2
 SCALE: 1/2"=1'-0"
 REF: 1 & 3/S-603



SECTION 3
 SCALE: 1/2"=1'-0"
 REF: 8/S-551



TYPICAL MASONRY WALL DETAILS
 SCALE: 1/2"=1'-0"
 REF: 3 & 4/S-551



TYPICAL MASONRY DETAILS
 SCALE: 1/2"=1'-0"
 REF: -

MASONRY WALL LAP SCHEDULE
REF: 9/S-551

SIZE	(1) BAR IN CENTER OF :				(2) BARS IN SINGLE	
	6" CMU	8" CMU	10" CMU	12" CMU	VERTICAL CELL :	HORIZONTAL BB :
#3	12"	12"	12"	12"	17"	25"
#4	17"	13"	12"	12"	30"	36"
#5	27"	20"	15"	13"	45"	45"
#6	54"	37"	29"	24"	54"	54"
#7	NP	52"	40"	33"	63"	63"
#8	NP	72"	61"	50"	72"	72"
#9	NP	NP	73"	64"	82"	82"

ABBREVIATIONS

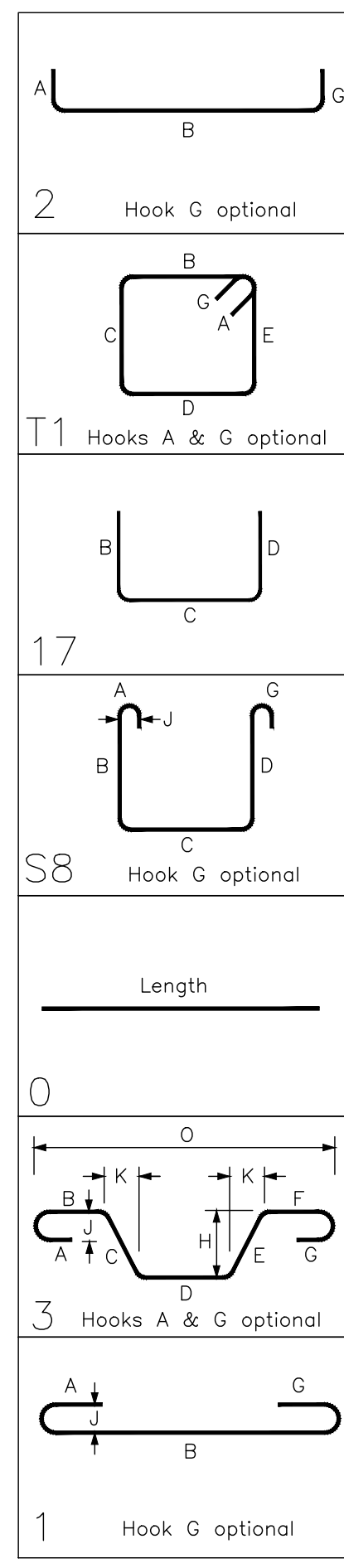
TOP	-
BOTTOM	BOT
TOP&BOTTOM	T&B
CONTINUOUS	CONT
FACE BAR	-
CORNER BAR	COR
VERTICAL	VERT
HORIZONTAL	HOR
STIRRUPS	STIRR
EACH WAY	EW
EACH FACE	EF
INNER FACE	IF
OUTER FACE	OF
EACH SIDE	ES
MASONRY	M
DOWEL	DWL
DOWEL/VERTICAL	D/V
TRANSVERSE	TRANS
LONG WAY BAR	LW
SHORT WAY BAR	SW

- NOTES:-**
- TYPICAL CLEARANCES
 - A). TOP - 2"
 - B). SIDES - 2"
 - A/E PLEASE VERIFY THE ALL CLOUDED ITEMS
 - PROVIDE FIELD CUT AS REQUIRED LOCATIONS
 - BAR TO BE PLACED AT EQUAL SPACING U.O.N.
 - TILT HOOK TO ACCOMMODATE THE COVER, IF NEED

ALL BARS IN THIS DRAWING ASTM A615 GRADE 60 BLACK UNCOATED

NOTE: REINFORCING STEEL PLACING DRAWINGS TO BE USED ONLY IN CONJUNCTION WITH CONTRACT DRAWINGS AND SPECIFICATIONS. ELEVATIONS & DIMENSIONS SHOWN ON THIS DRAWING ARE FOR VERIFICATION BY THE EOR OR FOR DETAILING PURPOSES ONLY AND SHOULD NOT BE USED FOR CONSTRUCTION UNLESS VERIFIED BY THE ARCHITECT, ENGINEER OF RECORD, OR CONTRACTOR.

Release Number: CM-D-1 TO CM-D-8												
BENDING DETAILS												
Bar Mark	Qty	Size	Total Length	Type	'A'	'B'	'C'	'D'	'E'	'F'	'G'	'H'
4C03	4	#4	3'-0"	2	0'-8"	1'-8"					0'-8"	
4C04	4	#4	6'-7"	2	0'-8"	5'-3"					0'-8"	
4C05	4	#4	4'-8"	2	0'-8"	3'-4"					0'-8"	
4C06	20	#4	4'-9"	11	0'-4 1/2"	0'-8"	1'-4"	0'-8"	1'-4"		0'-4 1/2"	
4C07	16	#4	4'-8"	2	0'-8"	4'-0"					0'-8"	
4C16	4	#4	8'-2"	2	0'-8"	7'-6"					0'-8"	
4C17	21	#4	4'-1"	11	0'-4 1/2"	0'-8"	1'-0"	0'-8"	1'-0"		0'-4 1/2"	
4C19	4	#4	2'-8"	2	0'-8"	2'-0"					0'-8"	
4C20	18	#4	4'-0"	17		2'-0"	2'-0"				0'-8"	
4C21	5	#4	8'-2"	17		3'-9"	0'-8"	3'-9"			0'-8"	
4C22	302	#4	4'-10"	2	0'-8"	4'-2"					0'-8"	
4C23	6	#4	4'-1"	S8	0'-6"	2'-11"	0'-8"				0'-4 1/2"	0'-4"
4C24	22	#4	4'-5"	2	0'-8"	3'-9"					0'-8"	
4C25	8	#4	4'-2"	2	0'-8"	3'-6"					0'-8"	
4C26	12	#4	4'-3"	2	0'-8"	3'-7"					0'-8"	
4C27a	32	#4	4'-2"	2	0'-8"	3'-6"					0'-8"	
Varies To												
4C27c	24	#4	4'-7 1/2"	2	0'-8"	3'-11 1/2"					0'-8"	
4C28	4	#4	5'-2"	S8	0'-6"	4'-0"	0'-8"				0'-4 1/2"	0'-4"
4C30	22	#4	4'-4"	2	0'-8"	3'-8"					0'-8"	
Varies To												
4C32b	4	#4	4'-8 1/2"	2	0'-8"	4'-0 1/2"					0'-8"	
Varies To												
4C33b	4	#4	4'-4"	2	0'-8"	3'-8 1/2"					0'-8"	
4C36a	8	#4	4'-3"	2	0'-8"	3'-7"					0'-8"	
Varies To												
4C36c	4	#4	4'-8 1/2"	2	0'-8"	4'-0 1/2"					0'-8"	
4C38	6	#4	4'-6"	2	0'-8"	3'-10"					0'-8"	
4C41	10	#4	4'-7"	2	0'-8"	3'-11"					0'-8"	
4C45a	6	#4	4'-2"	2	0'-8"	3'-6"					0'-8"	
Varies To												
4C45c	4	#4	4'-6 1/2"	2	0'-8"	3'-10 1/2"					0'-8"	
4C46	18	#4	4'-9"	2	0'-8"	4'-1"					0'-8"	
4C55a	6	#4	4'-4"	2	0'-8"	3'-8"					0'-8"	
Varies To												
4C55c	4	#4	4'-8 1/2"	2	0'-8"	4'-0 1/2"					0'-8"	
4C56	2	#4	4'-1"	2	0'-8"	3'-5"					0'-8"	
4C58a	8	#4	4'-2"	2	0'-8"	3'-6"					0'-8"	
Varies To												
4C58c	4	#4	4'-7 1/2"	2	0'-8"	3'-11 1/2"					0'-8"	
4C61a	12	#4	4'-2"	2	0'-8"	3'-6"					0'-8"	
Varies To												
4C61d	4	#4	4'-9"	2	0'-8"	4'-1"					0'-8"	
CS59	33	#5	2'-6"			2'-6"					0'-8"	
CS60	66	#5	2'-0"			2'-0"					0'-8"	
SC01	2	#5	8'-8"	2	0'-10"	7'-10"					0'-8"	
SC02	229	#5	8'-2"	17		3'-9"	0'-8"	3'-9"			0'-8"	
SC03	2	#5	4'-7"	2	0'-10"	3'-9"					0'-8"	
SC04	72	#5	7'-6"	3		3'-9"	3'-9"				0'-8"	
SC07	10	#5	10'-10"	2	0'-10"	10'-0"					0'-8"	
SC08	8	#5	8'-10"	2	0'-10"	8'-0"					0'-8"	
SC10	12	#5	6'-2"	1	0'-7"	5'-7"					0'-5"	
SC11	404	#5	1'-6"	2	0'-10"	0'-8"					0'-8"	
SC12	2	#5	8'-6"	17		3'-9"	4'-9"				0'-8"	
SC19	4	#5	8'-0"	17		3'-8"	0'-8"	3'-8"			0'-8"	
SC29	4	#5	8'-4"	1	0'-7"	7'-9"					0'-5"	
SC40	4	#5	10'-2"	1	0'-7"	9'-7"					0'-5"	
SC42	2	#5	6'-3"	1	0'-7"	5'-8"					0'-5"	
SC44	4	#5	5'-7"	1	0'-7"	5'-0"					0'-5"	
SC47	2	#5	5'-10"	1	0'-7"	5'-3"					0'-5"	
SC50	8	#5	7'-9"	1	0'-7"	7'-2"					0'-5"	
SC51	8	#5	8'-5"	1	0'-7"	7'-10"					0'-5"	
SC52	8	#5	9'-0"	1	0'-7"	8'-5"					0'-5"	
SC55	18	#5	16'-0"	2	0'-10"	14'-4"				0'-10"		
SC56	35	#5	10'-10"	17		5'-1"	0'-8"	5'-1"			0'-8"	
SC57	60	#5	20'-2"	2	0'-10"	19'-4"					0'-10"	
SC60	16	#5	18'-0"	2	0'-10"	16'-4"					0'-10"	
SC63	2	#5	7'-0"	2	0'-10"	6'-2"					0'-10"	
SC71	2	#5	7'-10"	2	0'-10"	6'-2"					0'-10"	
SC95	1	#5	10'-2"	17		4'-9"	0'-8"	4'-9"			0'-8"	
SC96	10	#5	8'-0"	17		3'-9"	0'-6"	3'-9"			0'-8"	
SC97	33	#5	2'-8"	17		0'-8"	2'-0"				0'-8"	
SC98	2	#5	8'-3"	1	0'-7"	7'-8"					0'-5"	
SC99	4	#5	7'-10"	1	0'-7"	7'-3"					0'-5"	
6001	6	#6	7'-8"	1	0'-8"	6'-4"					0'-8"	
6003	2	#6	9'-8"	17		4'-6"	0'-8"	4'-6"			0'-8"	
CS16	48	#7	6'-8"			6'-8"					0'-8"	
CS17	188	#7	5'-4"			5'-4"					0'-8"	
CS93	24	#7	8'-9"			8'-9"					0'-8"	
CS94	22	#7	8'-1"			8'-1"					0'-8"	
CS95	2	#7	7'-5"			7'-5"					0'-8"	
7C27	4	#7	7'-5"	1	0'-10"	6'-7"					0'-7"	
7C51	68	#7	6'-1"	1	0'-10"	5'-3"					0'-7"	
7C62	2	#7	7'-1"	1	0'-10"	6'-3"					0'-7"	
7C73	2	#7	10'-6"	1	0'-10"	9'-8"					0'-7"	
7C82	4	#7	7'-11"	1	0'-10"	7'-1"					0'-7"	
7C92	4	#7	6'-8"	1	0'-10"	5'-10"					0'-7"	
7C98	4	#7	8'-8"	1	0'-10"	7'-10"					0'-7"	



Release Number: CM-D-1 TO CM-D-8 (COUPLERS)												
BAR LIST												
Bar Mark	Qty	Size	Total Length	Type	Coupler Type	'A'	'B'	'C'	'D'	'E'	'F'	'G'
CS59	33	#5	2'-6"		FEMALE			2'-6"				
CS60	66	#5	2'-0"		MALE			2'-0"				
SC11	404	#5	1'-6"	2	FEMALE	0'-10"	0'-8"					
SC97	33	#5	2'-8"	17	FEMALE			2'-0"				
CS16	48	#7	6'-8"		MALE & FEMALE			6'-8"				
CS17	188	#7	5'-4"		MALE & FEMALE			5'-4"				
CS93	24	#7	8'-9"		MALE			8'-9"				
CS94	22	#7	8'-1"		MALE			8'-1"				
CS95	2	#7	7'-5"		MALE			7'-5"				

COUPLERS SCHEDULE				
SIZE	TYPE	QUANTITIES	SKETCHES	REMARK
#5	FEMALE	66	FEMALE END	C.J DOWEL
	MALE	66	MALE END	
#5	FEMALE	404	FEMALE END	SLAB DOWEL
	MALE	NILL	-	
#7	MALE	48	MALE END	WALL REBARS
	MALE & FEMALE	236	FEMALE END - MALE END	

MASONRY WALL LAP SCHEDULE					
REF: 9/S-551					
SIZE	(1) BAR IN CENTER OF :			(2) BARS IN SINGLE	(2) BARS IN SINGLE
	6" CMU	8" CMU	10" CMU	VERTICAL CELL :	HORIZONTAL BB :
#3	12"	12"	12"	17"	25"
#4	17"	13"	12"	30"	36"
#5	27"	20"	15"	45"	45"
#6	54"	37"	29"	54"	54"
#7	NP	52"	40"	63"	63"
#8	NP	72"	61"	50"	72"
#9	NP	NP	73"	64"	82"

ABBREVIATIONS	
TOP	-
BOTTOM	BOT
TOP&BOTTOM	T&B
CONTINUOUS	CONT
FACE BAR	-
CORNER BAR	COR
VERTICAL	VERT
HORIZONTAL	HOR
STIRRUPS	STIRR
EACH WAY	EW
EACH FACE	EF
INNER FACE	IF
OUTER FACE	OF
EACH SIDE	ES
MASONRY	M
DOWEL	DWL
DOWEL/VERTICAL	DV
TRANSVERSE	TRANS
LONG WAY BAR	LW
SHORT WAY BAR	SW

- NOTES:-**
- TYPICAL CLEARANCES
A). TOP - 2"
B). SIDES - 2"
 - A/E PLEASE VERIFY THE ALL CLOUDED ITEMS
 - PROVIDE FIELD CUT AS REQUIRED LOCATIONS
 - BARS TO BE PLACED AT EQUAL SPACING U.O.N.
 - TILT HOOK TO ACCOMMODATE THE COVER, IF NEED

ALL BARS IN THIS DRAWING ASTM A615 GRADE 60 BLACK UNCOATED

NOTE: REINFORCING STEEL PLACING DRAWINGS TO BE USED ONLY IN CONJUNCTION WITH CONTRACT DRAWINGS AND SPECIFICATIONS. ELEVATIONS & DIMENSIONS SHOWN ON THIS DRAWING ARE FOR VERIFICATION BY THE EOR OR FOR DETAILING PURPOSES ONLY AND SHOULD NOT BE USED FOR CONSTRUCTION UNLESS VERIFIED BY THE ARCHITECT, ENGINEER OF RECORD, OR CONTRACTOR.